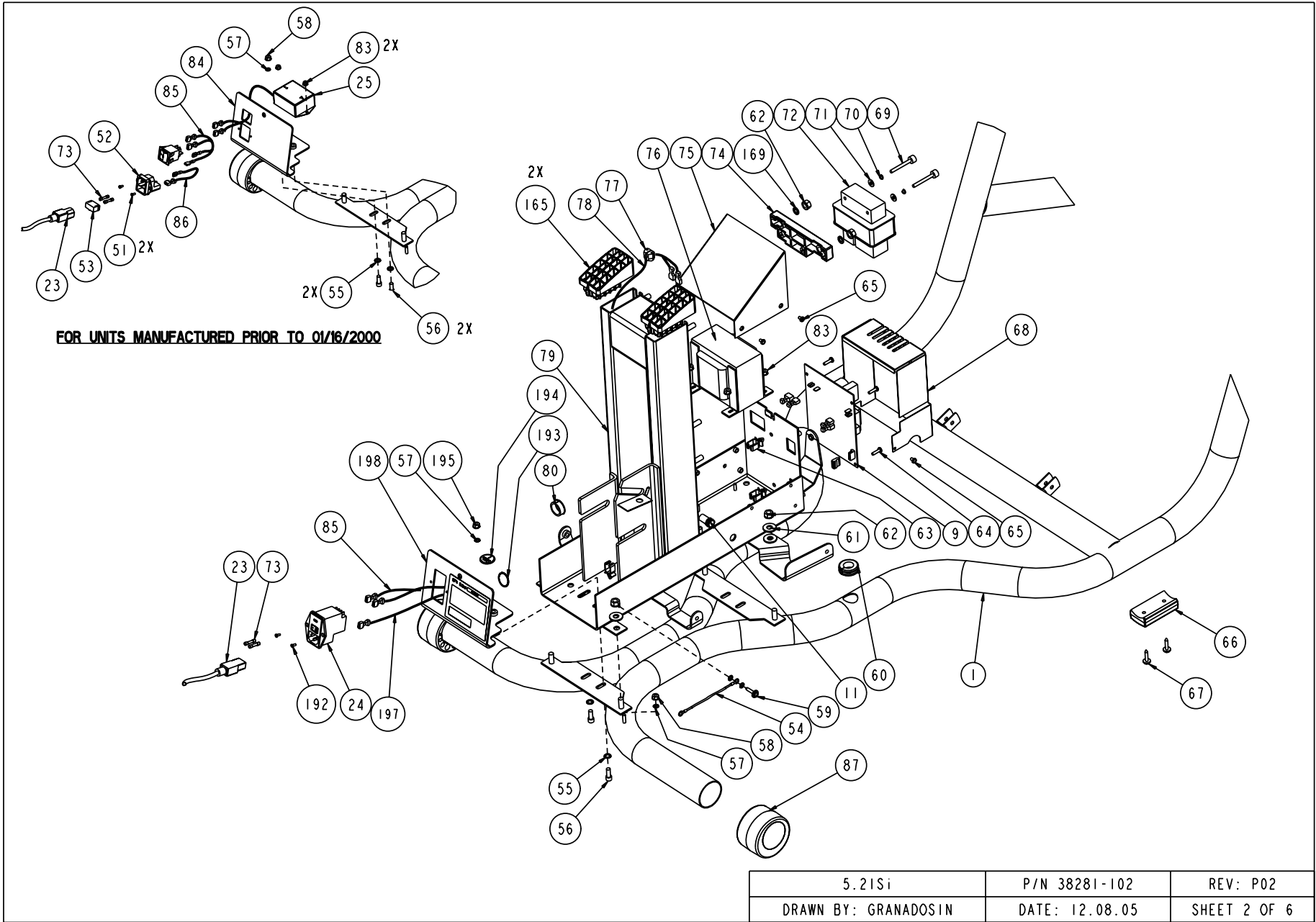
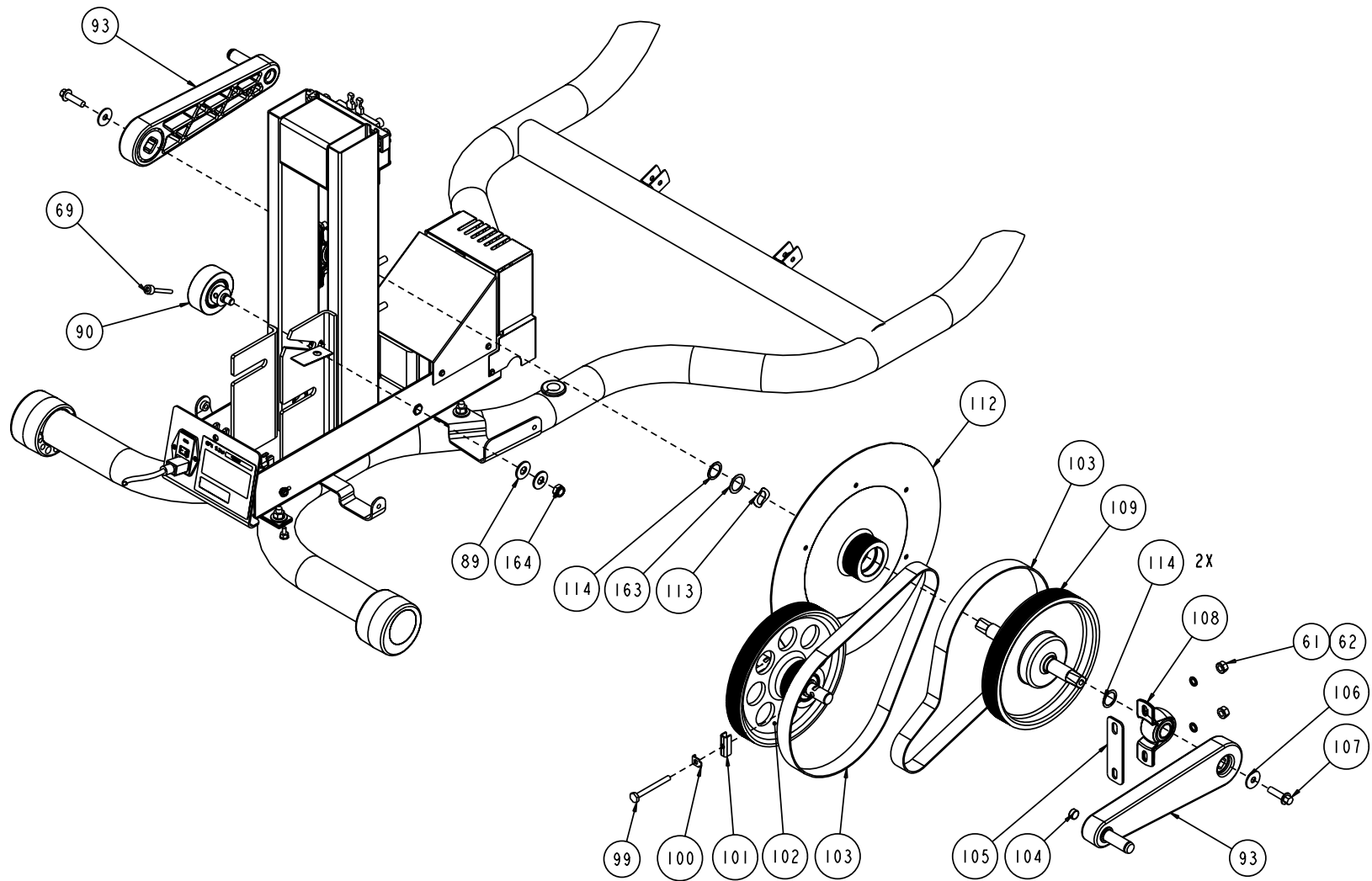


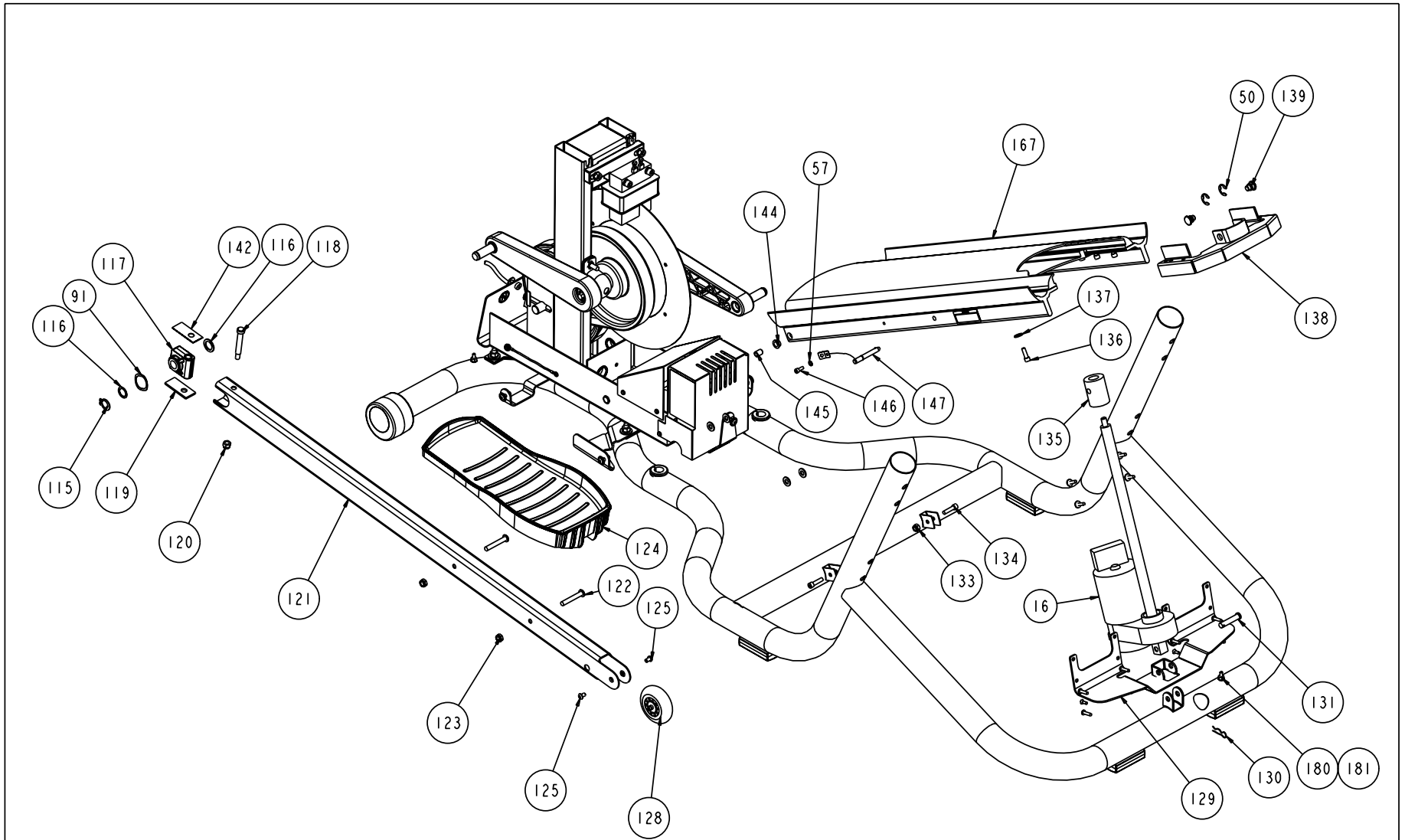
5.2iSi	P/N 38281-102	REV: P02
DRAWN BY: GRANADOSIN	DATE: 12.08.05	SHEET 1 OF 6



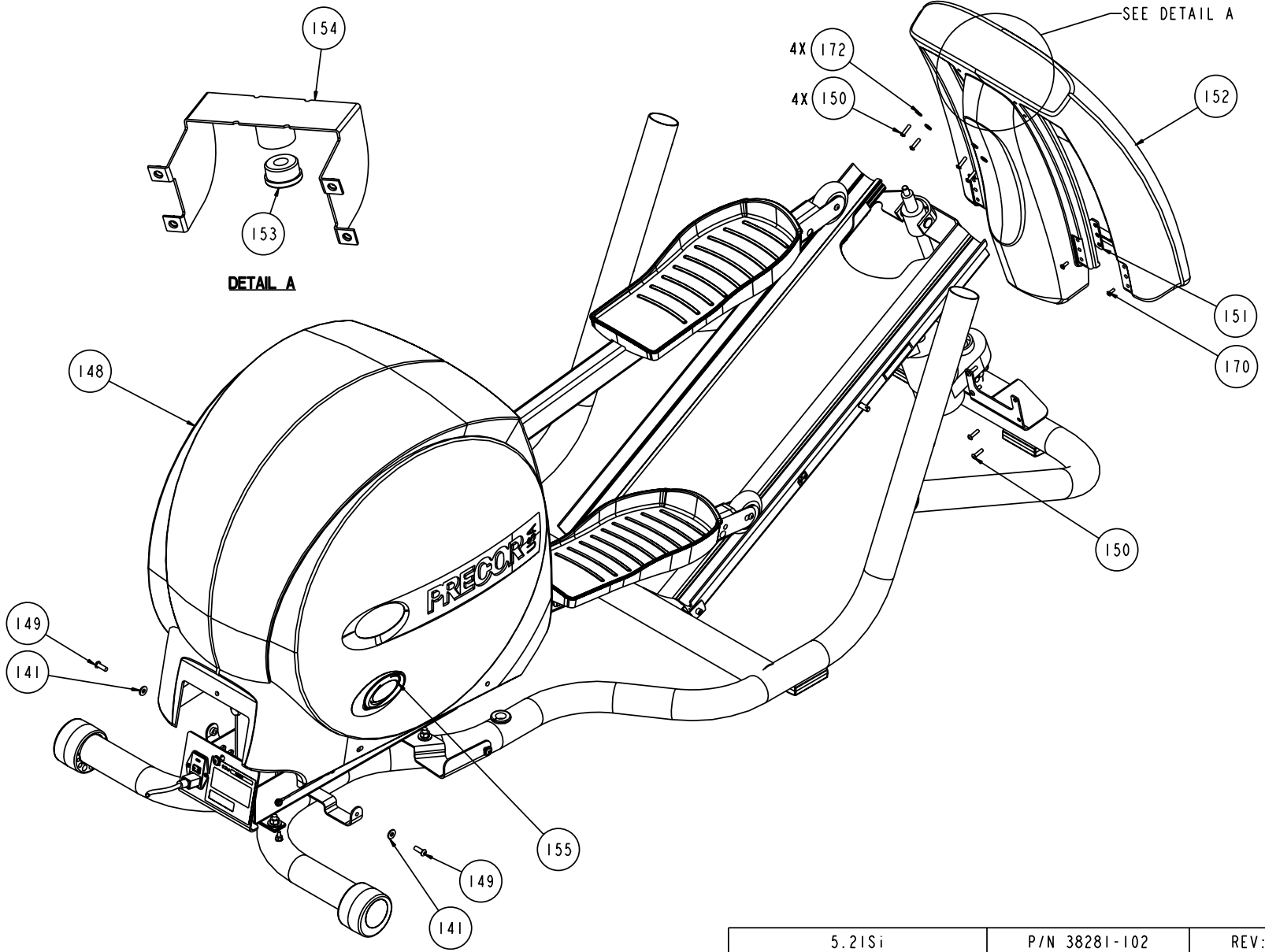
5.21Si	P/N 38281-102	REV: P02
DRAWN BY: GRANADOSIN	DATE: 12.08.05	SHEET 2 OF 6



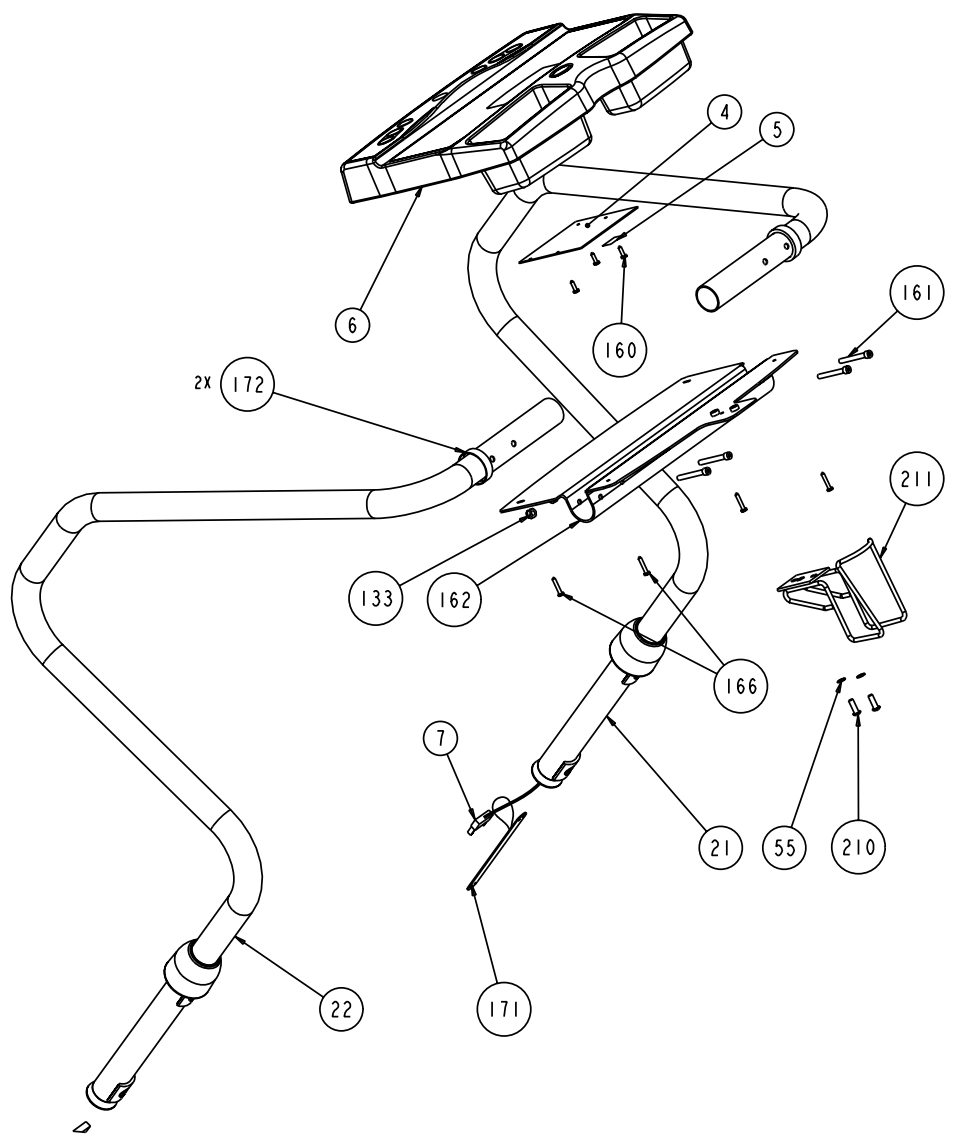
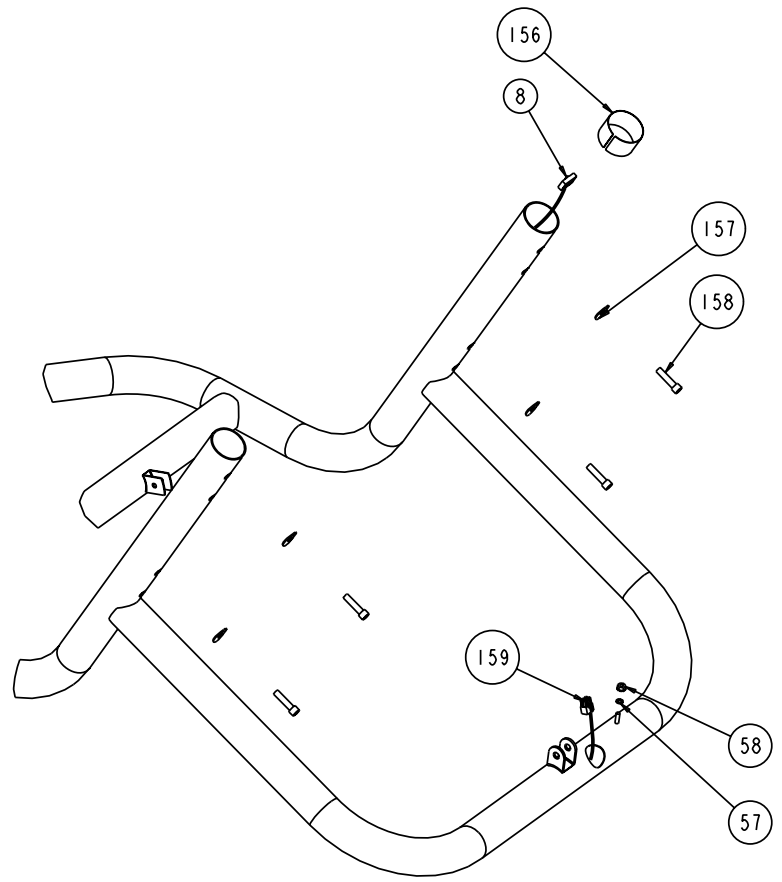
5.21Si	P/N 38281-102	REV: P02
DRAWN BY: GRANADOSIN	DATE: 12.08.05	SHEET 3 OF 6



5.21Si	P/N 38281-102	REV: P02
DRAWN BY: GRANADOSIN	DATE: 12.08.05	SHEET 4 OF 6



5.2iSi	P/N 38281-102	REV: P02
DRAWN BY: GRANADOSIN	DATE: 12.08.05	SHEET 5 OF 6



5.21Si	P/N 38281-102	REV: P02
DRAWN BY: GRANADOSIN	DATE: 12.08.05	SHEET 6 OF 6

**5.21si (serial code 5F)**

<b>Part Number</b>	<b>Description</b>	<b>Bubble Number</b>
37990-101	PCA, DISPLAY	4
43114-104	ASSY,PCA&SW,5.21SI	4.01
38285-106	PROM,5.21SI,V1.06	5
38267-101	ASSY,DISPLAY ENCLOSURE,521SI	6
37878-101	ASSY,CBL, 26AWG, INTERCONN.,	7
37874-101	CABLE,INTERCONNECT LOWER COIL	8
38952-103	PCA,EFX LOWER,PARALLEL	9
37301-103	ASSY, REMOTE SENSOR	11
38280-102	ACTUATOR,LIFT,5.21SI	16
38274-101	ASSY,HANDLEBAR,LEFT,5.21SI	21
38274-102	ASSY,HANDLEBAR,RIGHT,5.21SI	22
10392-111	POWER CORD,125VAC,10A,8.0 FT	23
10714-101	SWITCH,ROCKER,DPST,PANEL MT	24
12167-102	PWR ENTRY MOD & FILTER,250VAC,3A	24
10714-101	SWITCH,ROCKER,DPST,PANEL MT	24.01
38219-103	ASSY,LINE FILTER,120V	25
39491-103	ASSY,FILTER,POWER LINE,5A,5.21SI	25
WAGNN062-001	WASHER, WAVE, .87 OD X .62 ID	31
MMCN003-008	SCR,M3X8MM,PHIL,ZN	51
37831-101	ASSY,POWER ENTRY MODULE120V	52
10716-102	FUSE, DRAWER, 2 POLE, 5X20 MM	53
37175-103	ASSY,GROUND STRAP,3	54
WATNN025-003	WASHER, LK-INT, ID=.25,	55
CAKE025-100	SCREW,SKHD,1/4-20X1,BLK ZN,LK	56
WATNN020-002	WASHER, LK-INT, #10, ID=.200,	57
KHCN019-013	LOCKNUT, STARWASHER, 10-32,	58
PPKN013-075	SCREW,S/T,#6X3/4,FLTHD,PHIL,	59
11295-101	GROM,RND,MLD,SPLIT,11/16 ID X	60
WCCN031-008	WASHER, FLT, 5/16X.875X.083	61
KGCN031-027	LOCKNUT,STARWASHER,5/16-18,1/2	62
11278-101	CABLE CLAMP,INSERT	63
MGCN016-063	SCREW,MCH,8-32X5/8,PANHD,PHIL,	64
MGCN016-025	SCREW,MCH,8-32X1/4,PANHD,PHIL,	65
37535-101	FOOT, FIXED	66
PKCN019-075	SCREW,S/T,#10X.75,WSHHXHD,ZN	67
40748-101	SHIELD, PCA, LOWER	68
CBKN019-175	SCREW,SKHD,10-32X1.75,BLK ZN	69
WALCN019-005	WASHER, #10 SPLIT LOCK, ZINC	70
WACN019-005	WASHER, FLT, #10X.500X.049,ZN	71
39314-101	ELECTROMAGNET,EC BRAKE,	72
10719-121	FUSE,SLOW,4A,250V,5X20MM	73.01
11284-101	GROM, HORSE SHOE, (Z-16555)	77
38237-102	ASSY,CBL,PCA/MAGNET	78
38938-103	WELDMENT,DRIVE,521SI	79
11276-101	BUSHING,SNAP,SPLIT,ID=51/64,	80
KGCN016-013	LOCKNUT, STARWASHER 8-32, HEX	83
38826-202	BRACKET, PLUG,PT,C546	84
37519-102	ASSY,CBL,PWR ENTRY TO	85
37532-101	ASSY, POWER ENTRY MODULE, 120V	86
37534-102	FOOT, ADJUSTABLE	87

ABHN017-001	RING, RETAINER, EXTERNAL	88
WTCN038-008	WASHER, GRADE 8, 3/8, .438-ID,	89
43928-101	ASSY, IDLER PULLEY	90
WAGNN062-001	WASHER, WAVE, .87 OD X .62 ID	91
44363-103	ASSEMBLY, CRANK ARM, RETAIL, W/PRES	93
10427-111	FUSE, SLOW, .25A, 250V, 1/4 DIA	94
10427-140	FUSE, SLOW, 2A, 250V, 1/4 DIA	95
ADHN040-001	RING, RETAINER, INTERNAL, 40MM	96
WNNN069-003	WASHER, FLT, .935X.029, STL	97
HACN025-250	SCREW, 1/4-20X2-1/2, HEX, GR 2, ZN	99
37855-103	TAB, LOCKING	100
37385-101	BRACKET, TENSIONER	101
50538-102	ASSY, STEP UP PULLEY, C546	102
10217-119	BELT, POLY-V, 32, 320J10	103
11286-101	MAGNET, NEODYMIUM 30, DIA=.50	104
38304-501	SPACER, SHAFT, INPUT, 5.21SI	105
WNNN032-009	WASHER, FLT, .321X1.00X.090 THK	106
HTKT008-018	BOLT, SHIMANO CRANK, M8X18MM, NYLK	107
11245-103	BUSHING, HEAVY DUTY PILLOW BLK	108
38241-101	ASSY, INPUT PULLEY/SHAFT	109
10158-113	BEARING, BALL, 6004 2RS C3	110
ACHN165-006	RING, INTERNAL, 1.653, .062THK	111
50537-103	ASSY, FLYWHEEL	112
WAGSN072-001	WASHER, WAVE .1.05 O.D., .755	113
WNNN076-001	WASHER, SHIM, .75X1.00X.010 THK	114
AAHN063-003	RING, RETAINER, 5/8, EXTERNAL	115
WNNN063-001	WASHER, FLT, 5/8X.880X.010	116
38301-101	ASSY, PIVOT BLOCK	117
RAKN031-200	SCREW, SHLDR, 3/8 X 2, HEX	118
48340-101	SPACER, RAIL, URETHANE	119
KDKN031-025	LOCKNUT, HALF, 5/16-18, BLK ZN	120
44344-206	STAIRARM RAIL, 5.23 EFX, PT	121
TAKN031-200	SCREW, BTHD, 5/16-18X2, BLK ZN	122
KAKN031-016	LOCKNUT, HALF, 5/16-18, BLK ZINC	123
37314-108	PEDAL, FOOT	124
TENE006-010	SCREW, BTTNHD, SKT C/S, M6X1X10MM	125
48337-101	ASSY, STAIRARM WHEEL, CONSUMER EFX,	128
10401-106	PIN, CLEVIS, 3/8 X 1.75, SILVER	131
KDKN025-023	LOCKNUT, FULL, 1/4-20, BLK ZN	133
CCNN025-100	SCREW, SKHD, 1/4-20X1, SS, LK	134
11408-103	NUT, LIFT, DELRIN	135
CCKN025-075	SCREW, SKHD, 1/4-20X0.75, BLK ZN, LK	136
WNNN026-006	WASHER, FLT, 1/4X.625X.063, STL	137
38252-201	ASSY, END BRACKET, 5.21SI,	138
38448-102	LIFT PIN	139
WNKN026-006	WASHER, FLT, 1/4X.625X.063, BLK ZN	141
48340-102	SPACER, RAIL, URETHANE, RED	142
10043-109	BEARING FLANGE ID-.377, OD-.502	144
CBKN019-050	SCREW, SKHD, #10X32X0.50, BLK ZN, LK	146
38291-102	ASSY, REAR COVER/LABELS, 5.21SI	148
TFKN025-075	SCREW, BTHD, 1/4-20X3/4, BLK ZN	149
TBKN019-075	SCREW, BTHD, 10-32, 3/4, BLK ZN	150



39632-101	PLATE,CLAMP,FRONT COVER	151
38292-104	COVER,FRONT,5.21SI	152
11423-101	BEARING,BRKT,FRONT CVR,5.21SI	153
38294-202	ASSY,BRKT,TOP,FRONT COVER,PT	154
38299-102	LABEL,LOGO,ELIPSE,5.21SI,DURO-LENZ,	155
37930-101	LABEL, CAUTION, HR ASSY, 5.21S	156
38702-102	WASHER, CURVED,OD.875,ID.344,	157
CAKE031-125	SCREW,SKHD,5/16-18X1.25,BLK ZN,LK	158
39346-101	ASSY,CBL,PCA TO LIFT	159
PMKN016-050	SCREW,TCS,#8X1/2,PHIL,BLK ZN,TYPE25	160
CAKN025-200	SCREW,SKHD,1/4-20X2,BLK ZN	161
38956-501	PLATE,DISPLAY,5.21SI,PT	162
WNNN081-003	WASHER,FLT,1.188-1.0X.027,STL	163
KACN038-015	LOCKNUT,HALF,3/8-16,ZN	164
PMKN016-088	SCREW,TCS,#8X7/8,PHIL,BLK ZN,TYPE 2	166
38255-101	ASSY,RAMP	167
37235-501	LABEL, CAUTION: MOVING PARTS	168
10010-117	WASHER, FLT,5/16X.500X.065,BLK ZN	169
WNKN034-007	WASHER, FLT, 5/16X.500X.065,BLK ZN	169
MPCN019-050	SCREW,MCH,10-32X1/2,FLTHD,PHIL	170
37723-501	INTERCONN CBL, STRAIN RELIEF	171
38826-202	BRACKET, PLUG,PT,C546	198
43789-136	ASSY,CBL,2-COND,18AWG,36",QK DISC	199
10186-102	WRENCH, ALLEN, 1/4	207
10186-101	WRENCH, ALLEN, 5/32	208
TFKN025-075	SCREW,BTHD,1/4-20X3/4,BLK ZN	210
38808-501	ASSY, WATER BOTTLE CAGE,PT	211
38282-102	OWNER'SMANUAL, 5.21SI	250
50583-101	CS KIT, FOOT PEDAL PLUG, EFX, 12 PC	270
WBKN031-007	WASHER, FLT, 5/16, ID=.344,	284
43591-103	ASSY,PLUG BRACKET,EFX,UNIVERSAL	290
10716-102	FUSE, DRAWER, 2 POLE, 5X20 MM	401
11279-102	PWR ENTRY MOD,250VAC,10A,2POLE	402
38826-501	BRACKET,PLUG,PT,EFX,UNIVERSAL	402
MMCN003-008	SCR,M3X8MM,PHIL,ZN	403
37436-101	LABEL, CHASIS NEUTRAL	404
33984-101	LABEL, SAFETY, GROUND SYMBOL	405
37519-102	ASSY,CBL,PWR ENTRY TO	405
KHCN019-013	LOCKNUT, STARWASHER, 10-32,	406
WATNN020-002	WASHER, LK-INT, #10, ID=.200,	407
38826-202	BRACKET, PLUG,PT,C546	408
43601-101	ASSY,WIRE,GND	408
43601-101	ASSY,WIRE,GND	409
KGCN016-013	LOCKNUT, STARWASHER 8-32, HEX	410
KHCN019-013	LOCKNUT, STARWASHER, 10-32,	411
MMCN003-008	SCR,M3X8MM,PHIL,ZN	412
WATNN020-002	WASHER, LK-INT, #10, ID=.200,	413